



Melbourne Way, Worthing, BN12 4RU - £285,000

Aspire Residential are delighted to bring to the market this three bedroom mid terrace house in popular Goring By Sea. This property will be sold with no forward chain and internally offers a hallway, lounge/diner, kitchen, bathroom, two double bedrooms and one single bedroom. Externally the property offers front and rear gardens and a brick built shed with power. Call us today to book your viewing.

Key Features:

- **Mid Terrace House**
- **Generous Garden Space**
- **No Forward Chain**
- **Non Restricted Parking**
- **EPC - E**
- **Local Transport Links**

www.aspireresidential.co.uk

28 Goring Road , Worthing, BN12 4AD

01903 259961 info@aspireresidential.co.uk



Door Into;

Entrance Hallway *6' 3" x 9' 0" (1.90m x 2.74m)*
Electric panel radiator. Stairs. Wood flooring.

Lounge *21' 8" x 11' 8" (6.60m x 3.55m)*
Double glazed windows to front. Double glazed sliding doors opening to garden. Electric radiator to side wall. Featured fire place. Tv point. Carpets.

Kitchen *13' 7" x 7' 9" (4.14m x 2.36m)*
Double glazed windows and door out to garden. Matching range of wall and base units. Part tiled walls for splash back. Stainless steel sink with chrome mixer tap. Wood effect worktops. Space for cooker, dishwasher and washing machine. Extractor fan. Tiled floor.

Stairs up:

Bathroom
Double glazed frosted windows. Floor to ceiling tiled walls. Pedestal wash hand basin. Chain flush W/C. Panel enclosed bath with an overhead electric shower and hot and cold taps. Chrome heated towel rail.

Bedroom 2 *9' 0" x 12' 3" (2.74m x 3.73m)*
Double glazed windows to rear. Built in wardrobe. Storage cupboard. Carpets.

Bedroom 1 *13' 5" x 10' 0" (4.09m x 3.05m)*

Double glazed windows. Electric radiator. Wood flooring.

Bedroom 3 10' 1" x 6' 11" (3.07m x 2.11m)

Double glazed windows. Wood flooring.

Garden

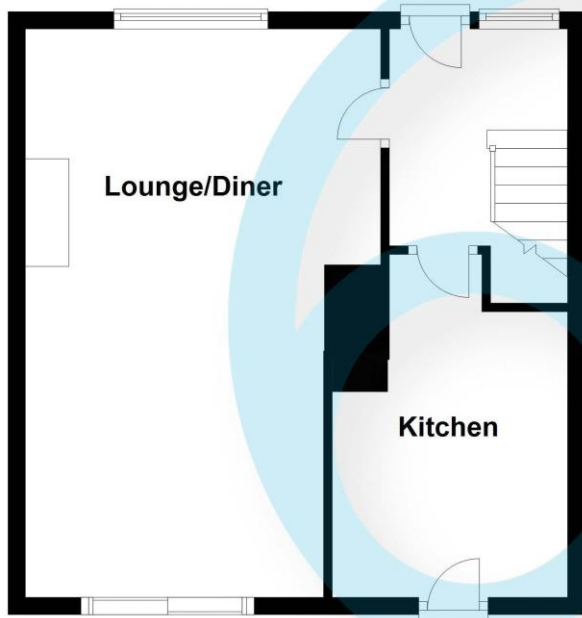
Decorative shrubbery throughout. Paving and decking. Brick built shed with electric shower points.





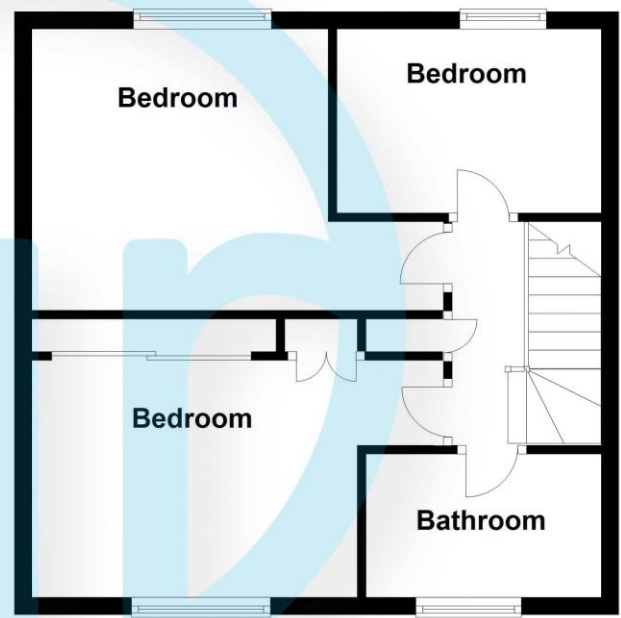
Ground Floor

Approx. 41.3 sq. metres (444.8 sq. feet)



First Floor

Approx. 43.4 sq. metres (467.2 sq. feet)



Total area: approx. 84.7 sq. metres (911.9 sq. feet)

www.aspireresidential.co.uk

28 Goring Road , Worthing, BN12 4AD
01903 259961 info@aspireresidential.co.uk